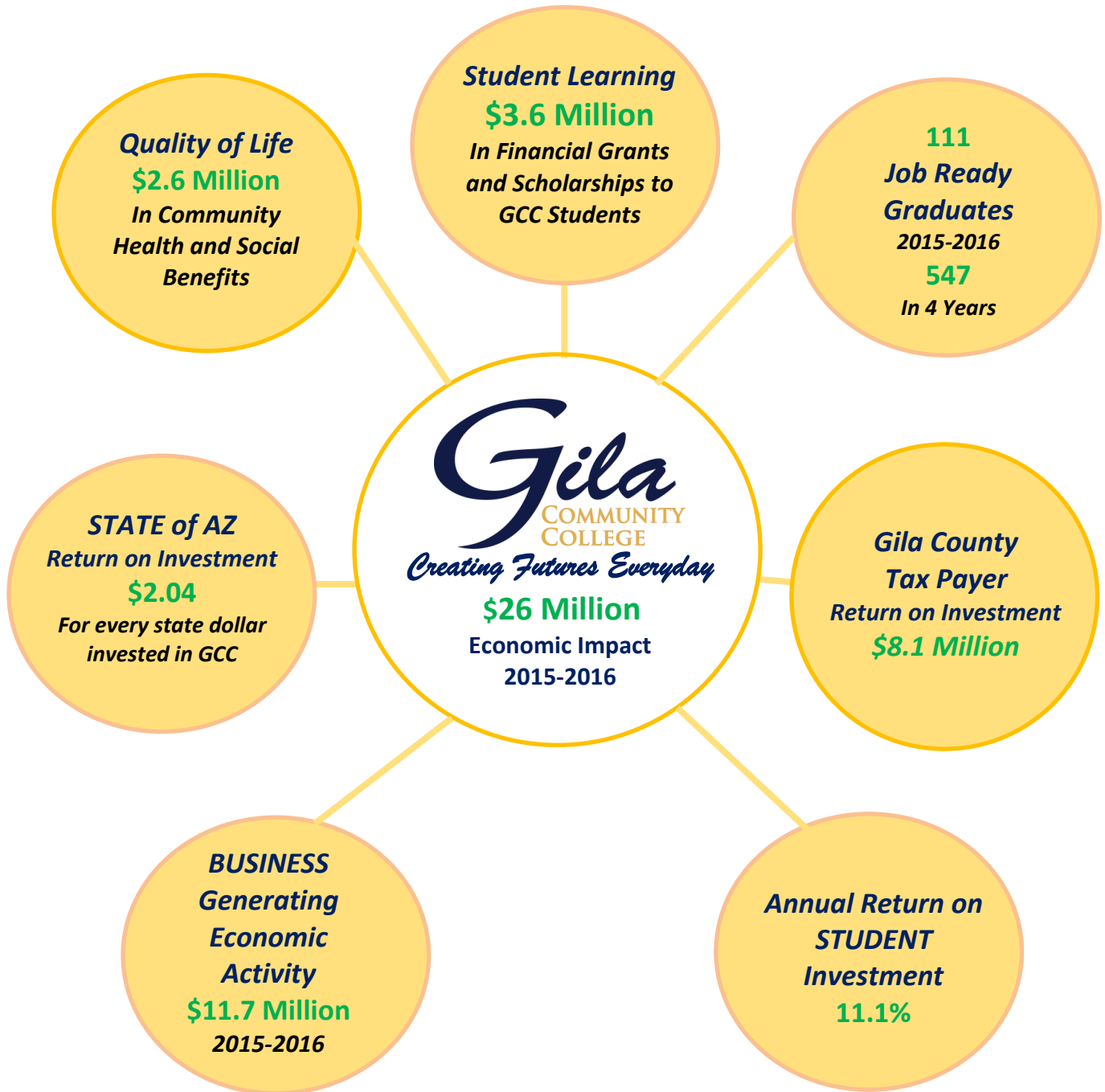


# Gila Community College Economic Impact 2015 - 2016



*Unlocking Futures*

Contact Information:

Stephen Cullen, Ph.D.  
Senior Dean

8274 S. Six Shooter Canyon Road  
Globe, Arizona 85501  
928-425-8481



### College Profile FY 2015-2016

Students	2,689
Graduates	111
Expenditures	\$7,607,994
Full-time Employees	32
Part-time Employees	152
Campuses	2

### County Profile FY 2015-2016

Population	53,116
Gross Regional Production FY 16	<b>\$1,689,212,312</b>

Average Earnings FY16	\$45,778
Jobs (2016)	16,666

#### Cities and Towns in Gila County

Globe, Hayden, Miami, Payson, Star Valley, Winkelman and several unincorporated rural areas.

“I am a cosmetology student and a high school student. I love that GCC makes it possible for me to start a career and finish high school at the same time.” Marisol Guereque, Payson

“The Math and English instructors are great. They are always there to give me the extra help I need if I’m struggling with something.” Alyssa Griffin, Globe

“I want to become a flight nurse. GCC is giving me a head start on my goal by offering great classes at affordable prices.” Caitlin Wheeler, Payson

“The instructors are awesome. They really work to prepare me for my future. They make learning fun.” Heidi Juarez, Globe

### HIGHER LEARNING MEANS HIGHER EARNING

**547** GCC students have earned degrees or certificates over the past 4 years. In 2016, GCC graduated 111 students from programs such as nursing, cosmetology, business, graphic design, and welding.

GCC’s students are prepared for the jobs of TODAY and the jobs of TOMORROW.

Students with community college degrees earn **\$412,000** more than high school graduates during their careers, or **\$11,770** annually.



### GCC Creates Jobs & Dollars

- GCC created \$26 Million in direct and indirect economic benefits in 2015-2016
- GCC’s direct and indirect employment in Gila County is valued at \$7.2 Million
- 88% of GCC’s students earn industry credentials and are ready to become wage earners and taxpayers
- County taxpayers receive a return of \$1.97 for every dollar invested in GCC
- Arizona receives a return on investment of \$2.04 of every dollar it invests in GCC
- GCC created \$11.7 Million in business activity and \$2.6 Million in community health benefits

### DID YOU KNOW. . .

- GCC ranks at the **98<sup>th</sup> percentile** for percentage of the community served by **all community colleges in the USA**
- GCC ranks at the **97<sup>th</sup> percentile** on the national Noel-Levitz Student Satisfaction Survey
- 92.6% of GCC students are Gila County residents
- 7.4% of GCC students come from outside Gila County
- GCC fulfills employment needs with timely and innovative programs such as Medical Coding and Billing and Dental Assisting
- GCC partners actively with businesses and government agencies to provide high quality educational services
- GCC serves young adults and life-long learners at its campuses in Globe and Payson, Arizona

### GCC Creates Futures

- 16% of GCC graduates go on to an Arizona University
- 27% of GCC graduates go on to attend other universities
- 71% of students achieve their academic goals
- Debt free financial aid is available to qualified students in the form of grants and scholarships
- GCC offers high demand programs in allied health care, welding, building trades, cosmetology, fire science and other fields
- GCC offers programs of study for students preparing for a university degree
- GCC offers college courses to high school students